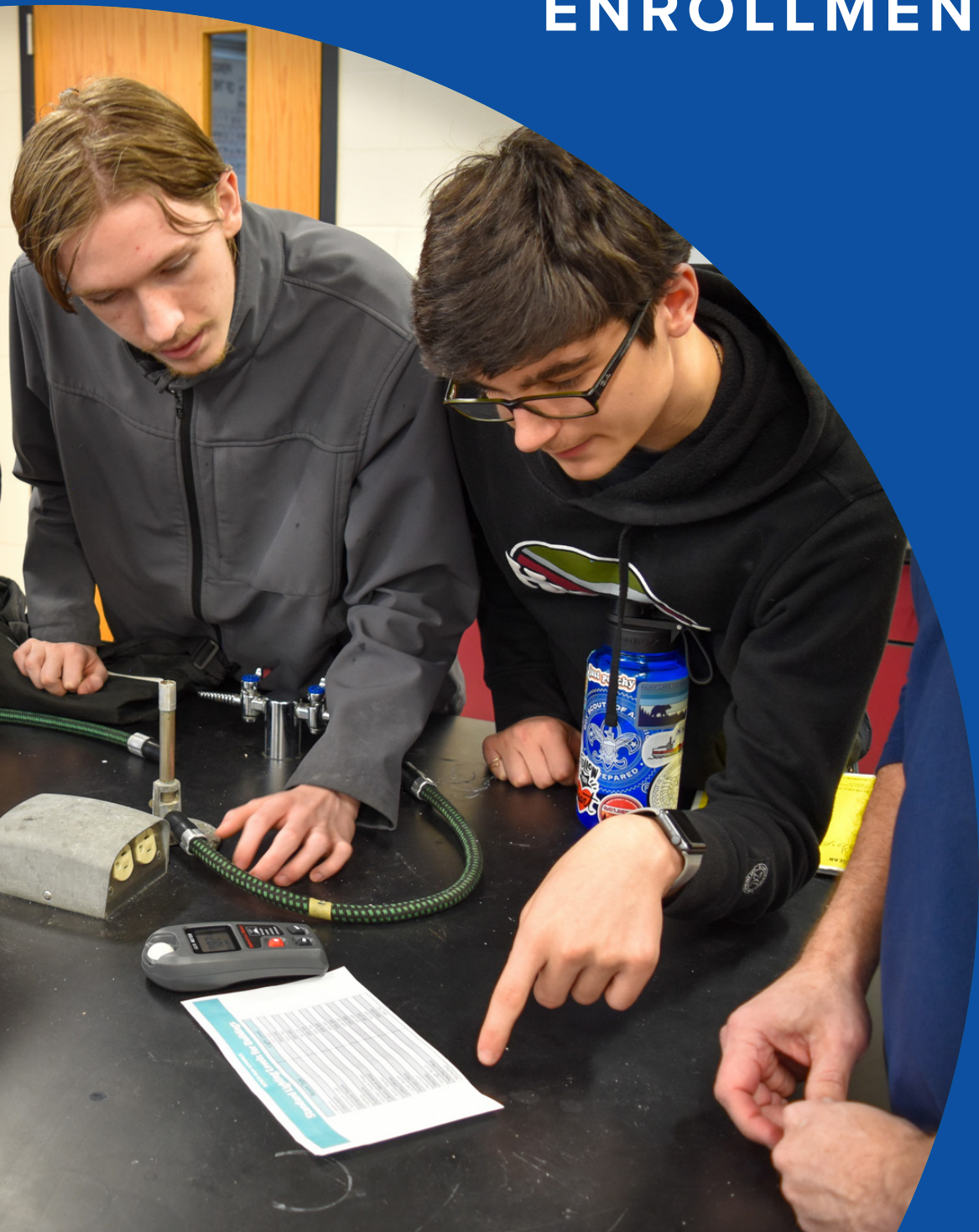


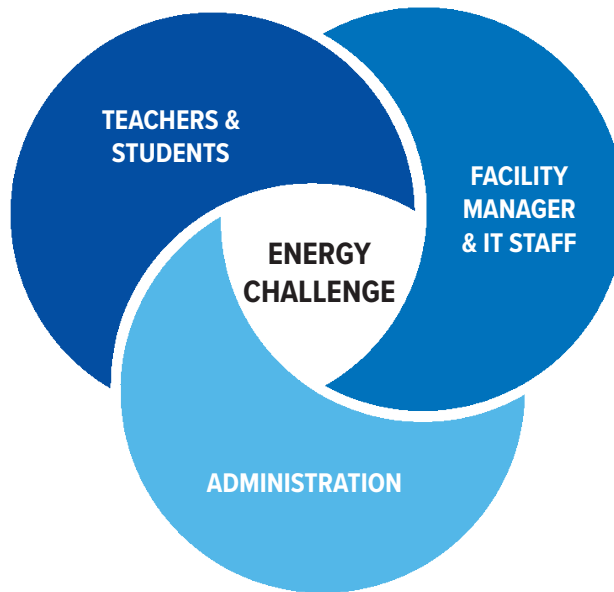
2024 BUSINESS OFFERINGS

RENEW OUR SCHOOLS ENROLLMENT GUIDE



SCHOOL EXPECTATIONS

A successful school energy challenge brings the teachers and students, administrators, facility manager, and IT staff together to raise energy awareness and reduce energy use at the school. It takes the support of all three groups to see a sustainable change in the school community. Schools contribute \$250 towards their enrollment which is reimbursed by FOCUS ON ENERGY® upon successfully completing the challenge. The responsibilities of each role are listed below:



TEACHERS & STUDENTS

- Champion school-wide energy initiatives.
- Integrate the challenge into lesson plans.
- Build awareness for energy challenge.
- Coordinate and submit school energy actions.
- Create a school energy team.

ADMINISTRATION

- Provide support and awareness of the competition.
- Complete a Memo of Understanding with Renew Our Schools.
- Support energy actions identified by the students.
- Support the creation of an energy policy.

FACILITY MANAGER/IT STAFF

- Complete a building questionnaire.
- Provide historical utility data.
- Submit electrical one-line drawings.
- Coordinate the installation of an eGauge monitor with a contracted electrician.
- Coordinate the installation of a hardwired ethernet connection.
- Verify correct installation of the eGauge with Renew Our Schools.
- Support energy actions identified by students.

PARTNER EXPECTATIONS

Participating schools have access to multiple resources to help them be successful in the challenge, including:

FOCUS ON ENERGY

- Reimbursement of enrollment fee (\$250) upon successful completion of energy challenge.
- eGauge installation reimbursement (up to \$1,200) with a detailed invoice.
- Support with on-site school energy audits and Energy Advisor mentorship.

WISCONSIN K-12 ENERGY EDUCATION PROGRAM (KEEP)

- Coordination of energy action support.
- Lesson planning assistance.
- Energy audit tools and guidance.

RESOURCE CENTRAL

- Access to the Renew Our Schools challenge portal to track challenge statistics and energy savings.
- eGauge installation guidance, support, and educational background knowledge.
- Regular updates and communication about the challenge.
- Energy audit tools and curriculum.



RENEW OUR SCHOOLS

Focus on Energy partnering with Resource Central and KEEP is enrolling schools in the Renew Our Schools competition. Renew Our Schools is a powerful five-week energy competition that gets students and staff in schools across the nation excited about responsible energy use. Schools use real-time energy gauges to monitor electricity use and see the immediate impact of making energy-saving changes.

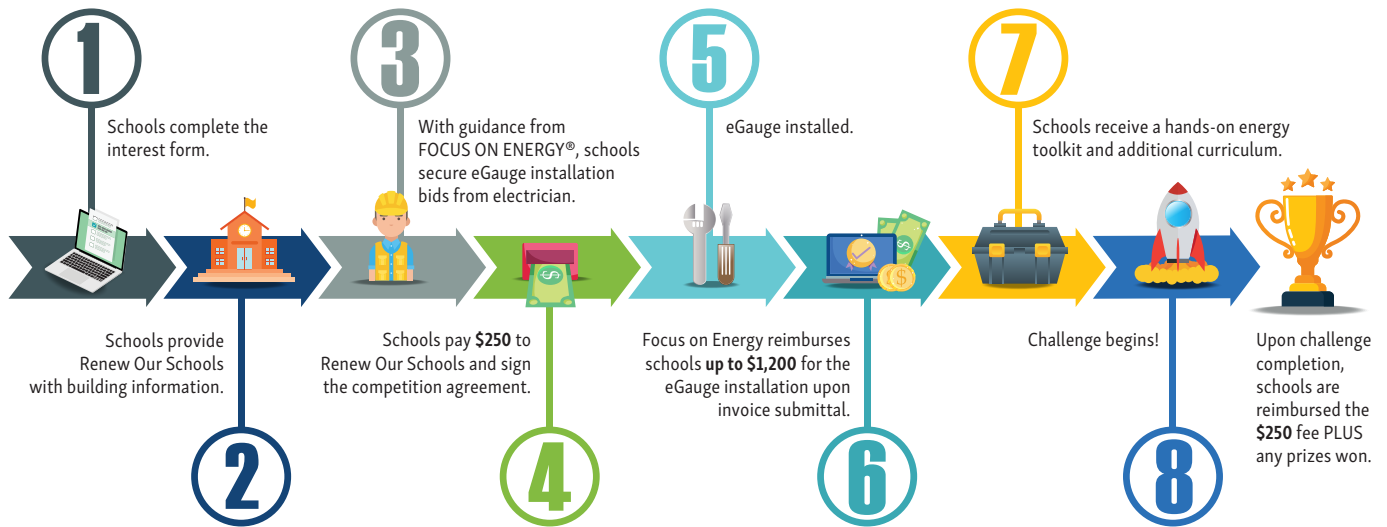
HOW DOES IT WORK?

Every school receives an eGauge, an electricity monitor that shows building energy use in real time. Schools assemble an energy team and receive a toolkit for hands-on learning. Points are earned for saving energy and completing school energy actions. Schools earning the most points are eligible for cash and prizes. The graphic below outlines the process and timeline for the competition.

RENEW OUR SCHOOLS

Get smart about energy use.

School Energy Challenge Road Map



Learn more about the challenge:
focusonenergy.com/renewourschools



Wisconsin's K-12 Energy Education Program (KEEP)
College of Natural Resources
University of Wisconsin - Stevens Point



REDUCING ENERGY WASTE ACROSS WISCONSIN

FOCUS ON ENERGY®, Wisconsin utilities' statewide program for energy efficiency and renewable energy, helps eligible residents and businesses save energy and money while protecting the environment. Focus on Energy information, resources, and financial incentives help to implement energy efficiency and renewable energy projects that otherwise would not be completed.

©2024 Wisconsin Focus on Energy

