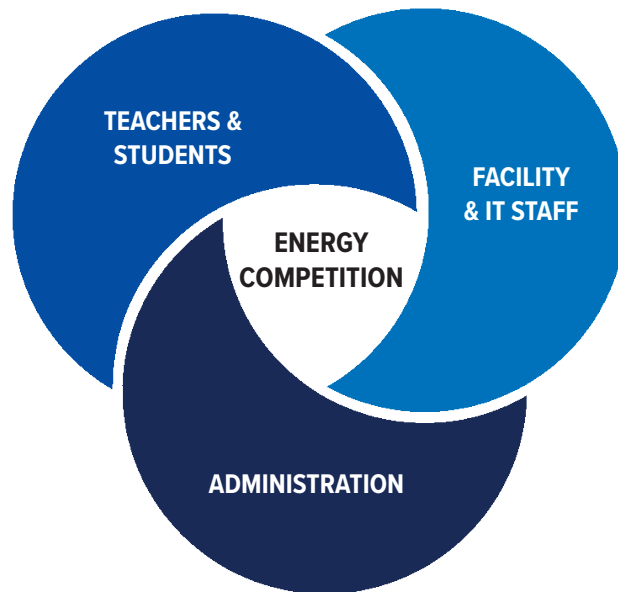


RENEW OUR SCHOOLS ENROLLMENT GUIDE



SCHOOL EXPECTATIONS

A successful school energy competition brings the teachers, students, administrators, facility, and IT staff together to raise energy awareness and reduce energy use at the school. It takes the support of all three groups to see a sustainable change in the school community. The responsibilities of each role are listed below:



TEACHERS & STUDENTS

- Champion school-wide energy initiatives.
- Integrate the competition into lesson plans.
- Build awareness for energy competition.
- Coordinate and submit school energy actions.
- Create a school energy team.

FACILITY & IT STAFF

- Coordinate the installation of an eGauge monitor with a contracted electrician.
- Coordinate the installation of a hardwired ethernet connection.
- Support energy actions identified by students.

ADMINISTRATION

- Provide support and awareness of the competition.
- Support energy actions identified by the students.
- Support the creation of an energy policy.

PARTNER EXPECTATIONS

Participating schools have access to multiple resources to help them be successful in the competition, including:

FOCUS ON ENERGY®

- Reimbursement for eGauge purchase and installation (up to \$3,000) with a detailed invoice, plus installation guidance, support, and educational background knowledge.
- Support with on-site school energy audits and Energy Advisor mentorship.

KEEP - WISCONSIN K-12 ENERGY EDUCATION PROGRAM

- Coordination of energy action support.
- Lesson planning assistance.
- Energy audit tools, curriculum, and guidance.
- In-person site visit for each new school.
- Access to the Renew Our Schools portal to track competition statistics and energy savings.
- Regular updates and communication throughout the competition.



RENEW OUR SCHOOLS

Focus on Energy, in partnership with KEEP, is enrolling schools in the Renew Our Schools competition. This exciting six-week energy competition engages students and staff across the state to promote responsible energy use. Participants use real-time energy gauges to track electricity consumption, allowing them to see the immediate effects of their energy-saving efforts.

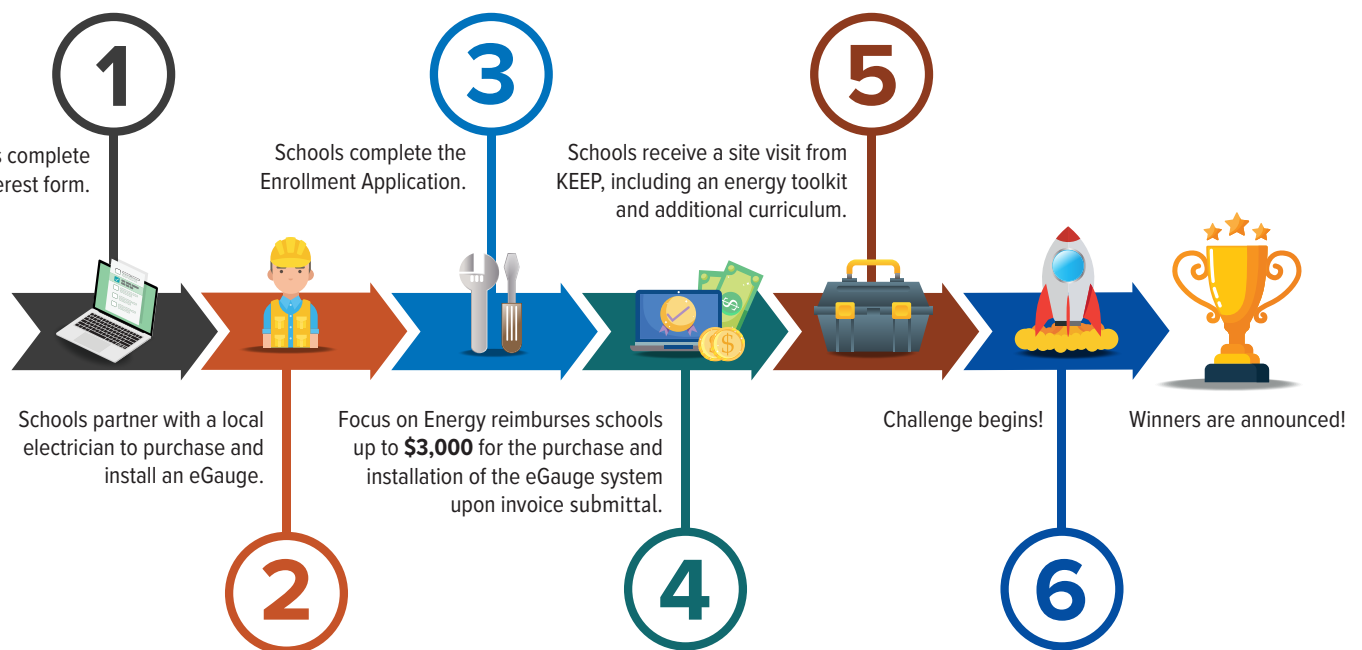
HOW DOES IT WORK?

Every school installs an eGauge with the help of a qualified electrician. The eGauge shows building energy use in real time. Schools assemble an energy team and receive a toolkit for hands-on learning. Points are earned for saving energy and completing school energy actions. Schools earning the most points are eligible for cash and prizes. The graphic below outlines the process and timeline for the competition. Learn more about the competition at focusonenergy.com/renewourschools.

RENEW OUR SCHOOLS

Get smart about energy use.

School Energy Challenge Road Map



REDUCING ENERGY WASTE ACROSS WISCONSIN

Focus on Energy, Wisconsin utilities' statewide program for energy efficiency and renewable energy, helps eligible residents and businesses save energy and money while protecting the environment. Focus on Energy information, resources, and financial incentives help to implement energy efficiency and renewable energy projects that otherwise would not be completed.

©2026 Wisconsin Focus on Energy